



SKI TRACKS

Volume 51, Issue 4

November 2010

<http://www.mainlineskiclub.com/>

In This Issue	Page
2011 Ski Trips	1
MLSC Board	2
With Warmest Thanks.....	2
Movie & Munch	3
Happy Hour at The Paddock—Strafford	3
Annual Wine & Cheese—Newtown Square	3
Wine 'n Dine High St Caffe—West Chester.....	4
Post-Thanksgiving Valley Forge Hike	4
Wine & Dine Victorian Christmas in Malvern	4
PSC Holiday Happy Hour—Cynwyd Club.....	5
Happy Hour at The Paddock—Strafford	5
MLSC & PCS Holiday Gala—KOP	5
"Hair of the Dog "Wine & Dine—Winberie's	5
Winter Walk & Picnic—Collegeville.....	6
EPSC's Learn-to-Ski Program—Spring Mtn	6
Ski Trips	7-10
Explore Southern Africa	10
Trip/Activity Reservation Form.....	11
Ski Trip Policy	12
Tennis Info and Schedule, Signup Form.....	13-14
Annual Membership Form.....	15
Calendar	16

Monthly Meeting & Social & Ski Fashion Show



Tuesday, Nov. 9th

7:30 pm

Crowne Plaza Valley Forge, KOP

Come on out for a FASHION SHOW of latest ski fashions presented by Buckman's Ski Shop, King of Prussia. The fashion show is our MOST POPULAR meeting of the year -- so be sure to mark the date on your calendar. You will also be able to be "up close and personal" to the fashions as our models walk among the tables! Come to see what you think about this year's outfits -- AND also to socialize with your MLSC friends and to sign up for your ski trips for the year 2011 if you haven't done this already.

You are always guaranteed a terrific time at our monthly meeting. If you have any questions, contact VP Fletcher Swanson at 610-431-1850 or President Howard Weisz at 610-918-3780.

DIRECTIONS: The Crowne Plaza Valley Forge Hotel is located on Mall Boulevard across from the King of Prussia Mall.

Welcome to Newcomers!!

Tuesday, November 9th

7:30 pm

All newcomers and prospective members are invited to an informal gathering at the beginning of each monthly meeting. Starting at 7:30, we will be meeting each other as well as learning about all the ski club has to offer!! We all know that MLSC is a lot more than ski trips!!

Look for the round table by the sign-in table next to the entrance to the meeting room. Sea Kaplan and Rosemarie Romano, New Member/Hospitality Co-chairs, will be conducting these informative and welcoming sessions. If newcomers have questions, call Sea at 610-722-9907 or Rosemarie at 610-688-6192.

MLSC members: tell your friends and co-workers all about MLSC and to come out for this event.

T MLSC Center City Monthly Meetings Discontinued

The Main Line Ski Club Center City monthly meetings have been discontinued due to inconsistent participation. **Philly Meetup website will continue.**

2011 SKI TRIPS:

The following chart displays the destinations, dates, and leaders of these trips. See the details starting on page 7.

Destination	Dates	Leaders
Park City, Utah	1/8 - 1/15	Howard & Kathleen Weisz
Lech, Austria with side trips to Berlin and Dresden	1/28 - 2/9	Jack Behrle
Greek Peak, NY	2/24 - 2/27	Bob Campbell
Stowe, Vermont	3/3 - 3/7	Sally Hilderbrand
Breckenridge, CO	3/5 - 3/12	Sally & Glenn Price

MLSC BOARD 2009 – 2010

PRESIDENT

Howard Weisz. 610-918-3780
e-mail hweisz@aol.com

VICE PRESIDENT

Fletcher Swanson 610-431-1850
e-mail fswanson@rcn.com

SECRETARY

Sally Swanson 610-431-1850
e-mail fswanson@rcn.com

TREASURER

Frank Milotich 610-356-5761
e-mail fmilo@verizon.net

MEMBERSHIP

Linda LaChapelle 610-527-2287
e-mail LindaLa2ski@verizon.net

SKI TRIPS

Kathleen Weisz 610-918-3780
e-mail kqweisz@aol.com

NEWSLETTER/GROUP EMAIL

Carolyn Bringhurst 610-889-2434
e-mail cbring12@msn.com

NEW MEMBERS/HOSPITALITY

Sea Kaplan 610-722-9907
e-mail Seakaplan11@gmail.com

Rosemarie Romano 610-688-6192
e-mail rr614@aol.com

TENNIS

Stacey Roehrs 610-889-9086
e-mail staceyroehrs@roehrs.com

WEB SITE LIAISON

Glenn Price 610 891 0929
Email glenniprice@glenniprice.com

EPSC/RACING TEAM

Pam DeCampi 610-356-1390
e-mail pdecamp1@hotmail.com

ACTIVITIES

Sally Hilderbrand 610-489-4718
e-mail shilderbrand@comcast.net

Message from the Prez



I hope you had a happy Halloween, and didn't get scared. When I worked in the Philippines, All Saints' Day, November 1st, was a national holiday, which they would declare a national holiday about October 28th. Christmas decorations usually went up by Labor Day.

I am looking forward to November 2nd, coming and going. Then we can get back to normal advertisements on TV. I don't ever remember the politicians slinging so much mud, even if their opponents happen to be witches or warlocks. As an old Philadelphia boy, regardless of your party, just remember, vote early and often!

Now that November is here it is time to check out all of your ski stuff. Get your skis tuned and get ready to go. Also, as Kathleen reminds me it's the beginning of Diet season, so you can get into your ski slacks from last year. Diet season officially ends on Thanksgiving and doesn't start again until after the Super Bowl, when we start thinking about spring and summer again.

Membership is a little lower this year. We have discussed our "target market", and Fletcher and I agree that our "market" should be retiring boomers, or like me, a young pre-boomer. Many of us joined after the kids were gone, and many of our friends went to live in the sun. So if you can think of any groups we should be speaking with, please let me know. At a high school reunion dinner I "sold" Jack's trip to a classmate and his lady last year.

Factoid of the month: The Amazon rain forest produces more than 20% of the world's oxygen supply. The volume of water in the Amazon river is greater than the next eight largest rivers in the world combined and three times the flow of all rivers in the United States.

Question of the month: On what day is there NOT a mattress sale?

Howard

Members Renewal Form on Page 15.

Warmest Thanks!!!

Very **WARMEST THANKS** to October's activity leaders -- Jim Sayne for the Oct. 3rd Ridley Creek Hike, Kathleen and Howard Weisz for the Oct. 9th Wine & Dine at Trattoria Guiseppa in Edgemont, Rich Schonwald for the Oct. 15th Happy Hour at the Paddock, and Howard Weisz again for the Laurel Hill Cemetery Flashlight Tour on Oct. 30th!

Special THANKS also to Bob Campbell for doing all of the leg work for the Murder Mystery Dinner Theater on Oct. 16th which didn't, alas, roster and was cancelled.

Liberty Bell Icon!!

Center City events are marked with a Liberty Bell icon.

Movie 'n Munch - King of Prussia Mall

Sunday, Nov. 7th

Approximately 4 pm



Join MLSC for an afternoon movie and casual dinner to follow. We'll meet at the King of Prussia movie theater (near Champs and Bahama Breeze on Mall Boulevard). This theater is a multiplex so there are lots of choices. I will send out an email the day before (11/6/10) when the weekend selections come out so you'll know times and choices. We'll meet in front of the theater and after the movies we'll go for dinner at one of the many places to choose from at the mall.

To make a reservation contact Valerie Shinbaum at take1joy@yahoo.com, or call 610 322 7829. Email would be preferable so that you can be sent email about the movie choices. Please make a reservation **by Friday November 5**, so Valerie has an idea of how many people to look for on Sunday. Looking forward to film and food - great combination!

Happy Hour at The Paddock - Strafford

Friday, Nov. 12th
6 to 7 pm



We will continue to have our Happy Hour at the Paddock. Most people arrive around 6:00 and HH ends at 7:00. There is a bar menu for \$5, which might be ample and some discounted drinks. So come out, bring a friend, and join in the libations and camaraderie. (Note we have been able to have the background music lowered.) See you there.

Directions: The Paddock is on the NW corner of Lancaster Ave. and Old Eagle School Road in Strafford. For information or if you have questions contact Rich Schonwald (610-356-2936) OR email him at rschonwald@verizon.net. Hope to see you there!!

Annual Wine & Cheese at Greene Countrie Clubhouse, Newtown Square



Sunday, Nov. 14th

4:00 to 7:00 pm

The Annual Wine & Cheese is MLSC's BIGGEST social event of the year so you don't want to miss it!! Last year we had a record-breaking 127 people attend -- will we get even MORE folks this year??? This year we will NOT be in a private home but in the clubhouse of Greene Countrie Village in Newtown Square. Meet new friends as well as renew old friendships while enjoying delicious hors d'oeuvres and wine/beer/soda. FYI the Eagles play on Monday night this week so there won't be any football distraction!

The cost is **\$15** for members, **\$25** for non-members payable at the door (please be SURE to bring cash!!!). This is a good deal since you undoubtedly won't need to eat any dinner!! You don't need to pay in advance but you DO need to make a reservation by FRIDAY, Nov. 12th to Sally Hilderbrand, 610-489-4718 or via email at shilderbrand@comcast.net. Please note that reservations are a MUST!!!

Directions to Greene Countrie Club House: From Rt. 30 in Paoli, go SOUTH on Rt. 252 towards Newtown Square for 4.8 miles. At the **Goshen Rd** traffic light, turn LEFT. Proceed 0.7 miles and turn LEFT onto **Earles Lane**. The clubhouse will be on your LEFT in 0.6 miles. (You'll proceed through one stop sign on the way.)

Parking is limited to about 20 cars in the clubhouse parking lot, and we urge everyone to carpool as much as possible. You can also park on the right side of Earles Lane OR turn into the development across from the clubhouse and park there.

Carpooling Info: If you are interested in carpooling, but don't know anyone else who is going, please meet at **3:40 p.m.** in the Paoli Shopping Center, corner of Rt. 30 and 252. Meet in front of the Paoli Hardware Store (#16 in the shopping center) which closes at 3 p.m. so parking will be fine close to the store. Look for **Jim Sayne** who will be meeting everyone and putting folks together. Don't be late!! Car pool cars will leave for the Wine & Cheese at 3:45!!! Jim's cell is 610-564-3590 if you need to contact him en route.

Wine 'n Dine at High Street Caffe

Saturday, Nov. 20th

7:00 pm

West Chester, PA



Come join MLSC for dinner at the High Street Caffe (not café) located at 322 S. High Street in West Chester. This casual eclectic place features Cajun, Creole and exotic cuisine, according to their website. Check www.highstreetcaffe.com out for more info on the food and beverage lists. Jambalaya, étouffe, blackened fish and chicken, lots of different seafood entrées, and there's an artichoke appetizer that's one of my personal favorites! The prices are reasonable, and there are lots of great menu choices as well as specials to choose from. The food is well prepared, portions are generous, service is attentive, and the atmosphere is lively. The restaurant has a liquor license but they also allow BYOB for wine ONLY with a \$5 corkage fee, so up to you if you want to bring your own wine.

Please bring cash to pay the bill, plan on an extra 26% for tax and tip. There is a small parking lot behind the restaurant; otherwise, look for street parking around the restaurant. There will be room for 10 people at this dinner. Contact Valerie Shinbaum at take1joy@yahoo.com, or 610 322 7829 by **TUESDAY, November 16th** to reserve your space.



**Thanksgiving Holiday Weekend
November 25-28.
Have a happy holiday!**

Post-Thanksgiving Hike in Valley Forge Park

Sun., Nov. 28th

1:30 pm



Eat too much for your Thanksgiving dinner?? Want to get in shape for the upcoming December holidays?? Tired at the thought of holiday shopping?? Well,

here's the perfect remedy! Come out for a "short and sweet" hike that's one of our favorites and is very scenic even in late-November! Total of four miles so it's just the right length for a pleasant way to get some exercise and fresh air and renew your spirit for the upcoming holidays!!

Meet in the parking lot of Knox's headquarters on Rt. 252 close to the covered bridge. We follow the path along the creek, over Valley Creek via the "hidden" bridge and then head up Mount Joy for some delightful views. Finally we complete our loop back to the parking lot. Jim Sayne will lead this hike. Please contact Jim at jimsayne@yahoo.com or 610-564-3590 if you plan to attend. The hike will be cancelled in the event of rain/bad weather.

Victorian Christmas in Malvern and Wine and Dine

Fri., Dec., 3rd

Festivities – 6:30 pm

Dinner at Alba – 8:30 pm

On Friday, December 3, Malvern begins its Victorian Christmas celebration. Many people dress up in Victorian dress and walk the streets. Also, there are free hay rides at the Malvern Savings Bank from 6:30 until 8:30. There is a coronet band playing from 6:15 until 8:30, and strolling musicians all evening plus carriage rides, and people selling hot chestnuts, what better way to get into the Christmas spirit? No, you do not have to dress in Victorian dress if you don't want to. What does a Victorian wear?

After the outdoor activities we'll meet for dinner at Alba, 7 King Street in Malvern at 8:30. They can only give us a reservation for eight, so if you want to attend please call Kathleen Weisz at 610-918-3780, or kqweisz@aol.com.

Alba is owned by Sean Weinberg, who used to be the executive chef at the Rose Tattoo. Alba now has a full service bar, but you can BYO wine; however, there is a \$12 corkage fee. Entrées are \$17 to \$32. Parking in Malvern is free, or you can park in any of the parking lots there including Alba's-right behind the restaurant.

Parts of King Street will be closed that evening, so do not take Bridge Street to King. The best way to get there would be to make a right onto King Street from Sproul Road, if you are coming from West Chester Pike.

We'll meet up outside of Alba's about 6:30, If you miss us there, we'll be walking the streets, and meet for dinner at Alba at 8:30.



The Philadelphia Sailing Club cordially invites you to attend
**The Holiday Happy Hour at the Cynwyd Club on
 Wednesday, December 15th
 6:00 – 10:00 PM.**

Cost per person includes: DJ, Hot Butlerved Hors d'Oeuvres, Oriental Stir Fry, Pasta Station, Coffee & Dessert.

Reservations Required!

Save money and receive a ticket for a free drink.
 PAY by Nov 1st \$32...by Dec 1st \$35...by Dec 9th \$37
 or
 \$40 at the DOOR and no drink ticket.

Send check made out to PSC,
 c/o LaChapelle, 1 Braxton Rd,
 Rosemont, PA 19010.

Contacts: Stephanie O'Connor 215-822-0318
 Linda LaChapelle 610-527-228
 Louisa Horsey 610-688-0315

Casual Attire, Cash Bar

PLEASE BRING AN UNWRAPPED TOY OR
 GIFT CARD FOR UNDERPRIVILEGED
 CHILDREN
 IN THE ROCK HALL AREA

MLSC & PSC

**Cordially Invite You to
 Our 3rd Annual
 HOLIDAY GALA
 Saturday, December 18th
 6:00 p.m. to 11:00 p.m.**

**Crowne Plaza Valley Forge
 Mall Boulevard, King of Prussia**

Includes: Butlerved Hors d'Oeuvres, Sit-down Dinner: Roast Beef or Salmon, Salad & Dessert, DJ dancing, Free Parking

Cash Bar

Attire: Holiday Festive, Black Tie Optional

Member Cost pp: \$70 by 11/10; \$75 after 11/10; Non-Member Cost: \$85; Singles Discount (\$10) Deadline: 12/10

Write check and choice of entrée payable to MLSC and send to: Kathleen Weisz, 1210 Winthrop Circle, West Chester, PA 19380

Questions: Sue Mc Daniel: 610-525-2409, suemcdaniel2@verizon.net ; Debbie Pentz: 610-283-2359, dupentz118@msn.com; Kathleen Weisz: 610-918-3780, kqweisz@aol.com

Happy Hour at The Paddock - Strafford

**Friday, Dec. 17th
 6 to 7 pm**



We will continue to have our Happy Hour at the Paddock. Most people arrive around 6:00 and HH ends at 7:00. There is a bar menu for \$5, which might be ample and some discounted drinks. So come out, bring a friend, and join in the libations and camaraderie. (Note we have been able to have the background music lowered.) See you there.

Directions: The Paddock is on the NW corner of Lancaster Ave. and Old Eagle School Road in Strafford. For information or if you have questions contact Rich Schonwald (610-356-2936) OR email him at rschonwald@verizon.net. Hope to see you there!!

**“Hair of the Dog”
 Celebration
 Wine ‘n Dine at
 Winberie’s**



Sun., Jan. 2, 2011 !!!

Wayne, PA

7:00 pm

Come join us to celebrate the New Year – 2011 and have a bit of the “Hair of the Dog!!” to calm any aches & pains from over-indulging!! Winberie’s long-standing “local bistro” personality and casual atmosphere has

made it one of the best places to eat! The restaurant combines Country French and Italian cooking with traditional American fare at moderate prices. Guests can choose from a diverse menu that includes terrific salads, sandwiches and choice beef, fresh fish & seafood, chicken, pasta and vegetable entrees. There is also a wide selection of lighter fare ranging from Alsatian chicken salad to London broil. There is an excellent selection of affordable liquors, cognac, beers and an extensive variety of wines.

Join us at Winberie's – across from Gateway Shopping Center – 1164 Valley Forge Road, Wayne, PA 19087, 610-293-9333. We can accommodate 12 to 15 people, so make your reservations early! To reserve, call Judy Alters 610-933-7241 or email her at jaa840@aol.com. Deadline for reservations is Friday, December 31, 2010.

Winter Walk & Picnic

Sunday, Jan. 9, 2011

11:15 am

Collegeville, PA



Post-holiday blahs got you down??? Looking to get rid of some Christmas calories??

Well, come out for some fresh air and exercise with MLSC!!! Weather permitting (no rain, ice, or deep snow), we will walk on the Perkiomen Trail from Arcola to Collegeville, total round-trip distance of about 4 miles, then have a winter picnic at Sally Hilderbrand's in Collegeville, with a TOTALLY homemade lunch – pork barbecues, “sloppy joes”, homemade vegetable soup, warm applesauce, and fresh-baked cookies, plus a few more goodies (Christmas Bark, for sure – now a Winter Walk favorite!!) Each year just about every morsel is devoured – but as someone commented, “What’s not to like about the food!!”

We will meet at Sally's home in Collegeville, and then carpool a brief half-mile to the trail to begin walking. This segment of the trail is very scenic, even in winter – it's entirely in the woods and overlooks the Perkiomen Creek below.

Cost of \$10 for the lunch for members (such a deal!!) – please bring CASH, \$20 for non-members. Call Sally at 610-489-4718 OR email her at shilderbrand@comcast.net by Friday night, January 7th to reserve. **No late reservation calls after this, please!**

EPSC's Learn-to-Ski Program

Spring Mtn.--Jan. 3, 2011

Eastern Pennsylvania Ski Council (EPSC) in conjunction with a number of member ski clubs offers a Learn-To-Ski program at Spring Mountain in Schwenksville, PA. The program held on Monday nights, will start on January 3, 2011 and will run a minimum of five weeks (weather permitting). This program is a great way to learn skiing basics and is also ideal for any intermediate skier who is interested in improving his/her technique.

The cost of a lift ticket and equipment rentals is very reasonable, and **the lessons, provided by ASIA-certified instructors, are FREE.** This program is only for MLSC members 15 yrs (Parental permission required) and older! Some ski areas ask to see your membership card, so be sure to have it with you.

Pre-registration is required. Forms will be available at the MLSC December meeting (Dec 14th), or by contacting **Pam DeCampli** at 610-356-1390 or pdecampli@hotmail.com, **Pete Ryan**, EPSC program coordinator at 215-657-8792 or peteski@juno.com, or **JoAnn Landis**, program administrator at joscott49@verizon.net.

DISCOUNT LIFT TICKETS

Main Line Ski Club, through the Eastern Pennsylvania Ski Council, is again able to offer its members discount lift tickets for several Pennsylvania, New York and New England ski resorts.

The ticket order form and memo can be printed from the EPSC web site (www.easternpaskicouncil.org). Read the memo carefully! Unused tickets can be returned for credit/refund less a service charge.

Send the Order Form, a SASE and a check payable to EPSC directly to Ken Foster (address is on the form), who is running the program for EPSC.

EPSC Has Gone Green

The EPSC publication *SnowDrifts* has gone green and no longer will be publishing a hard copy of the Skier Guide and Directory. The information, programs, trips and directory are now available on the EPSC web site www.easternpaskicouncil.org.

EPSC RACE CLINIC has been discontinued.

THINK



SNOW

Park City, Utah - Downhill



January 8-15, 2011

When it comes to perfect powder, it's hard to beat Park City, Deer Valley & the Canyons! Critics say this 3-mountain resort is blanketed with the "Greatest Snow on Earth"! We'll ski all three mountain resorts (Park City, Deer Valley and the Canyons). We're staying at the popular Peaks Hotel on Park Avenue. Each unit has a king or queen bed for couples, or two twins for singles, all with wireless Internet access, coffeemaker, iron, hairdryer and in-room safe. We walk out in the morning and hop on our free shuttle to the mountain of our choice.

We get a **free gourmet breakfast daily** (we'll plan our day), plus free cookies and hot chocolate delivered to our rooms après ski. Then we'll meet in the upstairs Sports Bar & Grille to make our dinner plans, (including a big group dining event in their formal dining room one night.) Other amenities include: a large heated outdoor pool and indoor heated pool, large hot tub, and dry sauna, plus free ski storage. We'll have all kinds of special events including our Pre and Post-Trip Parties at our house, and on site a Free Welcome Party by the hotel, plus two free Leaders wine 'n cheese parties on site. Plus, an extra added attraction: Sue & Chase McDaniel have offered to host our whole group for an elegant cocktail party at their gorgeous Presidential Condo Suite at the "Westgate Park City" at the Canyons. You don't want to miss that!

- Dates:** January 8-15, 2010 (Saturday to Saturday)
- Trip Leaders:** Kathleen & Howard Weisz
1210 Winthrop Circle
West Chester, PA 19380
610-918-3780
kqweisz@aol.com
- Departure:** Sat. Jan. 8th Lv PHL approx 7:20 am on Delta Flight TBD
Arr SLC 10:17 am approx.
- Lodging:** Park City Peaks Hotel
2121 Park Avenue
Park City, Utah 84060
435-649-5000
- Return:** Sat., Jan. 15th Lv SLC approx 10:05 am on Delta Flight TBD
Arr PHL at 4:39 pm approx
- Cost/Member:** Total Package: \$1395 approx/pp (dbl occ);
- Included:** Air, Ground Transportation to/from Hotel, Welcome Party, On site Leaders Parties, 5- of 7-Day Lift Tickets (3 for Park City; 1 for Deer Valley, 1 for the Canyons).

- NOT included:** Meals (except free breakfast)
- Payments:** **\$500** due on **Signup**,
\$500 due **October 6th**
\$395 Bal. due **November 9th**
- Insurance:** Available on Signup and Recommended
- Cancellation:** MLSC Policy will apply.

Lech, Austria, plus Berlin, Dresden



January 28 – February 9, 2011

This year's adventure takes us to the famously posh resort of Lech, Oberlech and Zurs and then on to Berlin via private motor coach for four nights! As many of you may know, the Arlberg region of Austria is a Club favorite, and this is our first visit to the beautiful Hotel Elizabeth in Lech!

We arrive on Saturday afternoon direct from Munich and will ski Sunday thru Friday, departing on Saturday by motor coach direct to Berlin. **We are accepting reservations beginning now.** If you wish to use your frequent flyer points, or make your own air arrangements, the cost of this trip is \$2090. With all airfare, the total cost is \$2990. **MLSC members ONLY.** Interested? **Call or email Jack Behrle for more details!**

- Dates:** Friday, January 28,
Returning February 9, 2011
- Trip Leader:** Jack Behrle & Wendy Wolf
105 Laurier Place,
Bryn Mawr, PA 19010
610/520-1855 or 508/645-3689
(Before 9/16)
john.behrle@comcast.net
- Transportation:** USAirways 706 direct from Phila. Int'l to Munich, arriving at 8.25AM. We return home from Berlin on Lufthansa 179 at 9:15AM, connecting in Frankfurt with USAir 701 departing at 12:45PM, arriving in Philly at 3:45PM. Included is private motor coach between Munich and Lech, Lech itself, and then Berlin, and finally on to Berlin airport for departure.
- Departure:** Friday evening, 1/28, at 6:10PM from Phila. International
- Lodging:** Four **** Hotel Elizabeth, in Lech. Full buffet breakfast and full 5-course dinners included daily. Full amenities including spa, pool, full bar/lounge and incredible ambiance!

In Berlin, we are staying at the 4**** Crowne Plaza City Center for four nights, returning to Philly on the afternoon of February 9.

Cost/Member: \$2,990.00, pp, double occupancy, including all air. (No air—deduct \$900.00 pp.) Two single rooms are also available! Please inquire.

Special Note: **This trip is available only to MLSC members, and Eastern PA Ski Council (EPSC)-affiliated clubs. We only have room for 35 so please do not hesitate!! After that point, a waiting list will be maintained.**

Includes: Breakfast and dinner daily (Lech), 7 nights lodging at the Elizabeth, Nightly entertainment (Lech), round trip airfare, taxes, tips and fees, 4 nights in Berlin, Buffet Breakfasts (Berlin), Arrival Reception, Pre- and Post-Trip Gatherings, Private walking tour of Berlin, All fuel surcharges, airport taxes. All prices are guaranteed firm regardless of Euro valuation.

NOT included: Lift tickets (currently 208 Euro for 6 days), meals on the mountain, optional guided ski tours, day trip to Dresden via rail

Deposit: \$500.00 due upon reservation with completed trip form

Next Payment: \$800 due **September 30**, 2010

Final Balance: Due on **December 15**, 2010 (Amount dependent on air arrangements).

Cancellation: MLSC Policy will apply. Trip insurance available and recommended.

Links:

http://www.hotelelisabeth.com/index_e.htm
<http://www.cp-berlin.com/>

Greek Peak, NY, DH Combo

Feb. 24 – 27, 2011



Snow tubing

3-Nights, Long Weekend Bus Trip

Located in NY's famous Snow Belt, Greek Peak (3-1/2 hrs away) has been making memories for over 50 years. With a 952 ft vertical, three Terrain Parks, ample terrain suited for every ability & interest, Greek Peak has long been the destination for fun seekers. Greek Peak's grooming & snowmaking are second to none, and with 32 trails of varied terrain, from treed glades & cruising runs to the steep ones, everyone in the group will be smiling from start to finish.

The best of all worlds: Alpine & X-country Skiing, Boarding, Skating, Tubing, Snowshoeing, Ice Skating. Cost includes Hope Lake Lodge room (dbl occ), Coach w/Snacks & drinks, 3 Bkfasts, 1 Dinner, taxes & tips.

The Nordic pass is \$9.00 pp on Fri, and \$14.00 pp Sat & Sun (for a total 3-Day Nordic for \$37 pp). Three-day Alpine lift ticket is \$95.20 pp.

A luxurious state-of-the-art spa with custom services, an extensive water park and an indoor/ outdoor hot tub complete the excitement. Hope Lake Lodge is impressive and state of the art (opened in Dec. 2009).

Join the fun. Sign up early.

Dates: February 24 - 27, 2011

Trip Leader: Bob Campbell
16 E. Stewart Ave
Lansdowne, PA 19050
bobsdesigns@verizon.net
Cell 215-327-8499

Transportation: Bus

Departure: 5:30 pm, Thursday, 2/24 via Perkiomen Coach

Lodging: Hope Lake Lodge

Return: Sunday, 2/27
Depart Greek Peak at 4 pm,

Cost/Member: \$535 pp (dbl occ.) **plus** Lift Tickets

Included: Bus, Inn, 3 breakfasts, 1 dinner, snacks and drinks on bus

Not Included: Lift tickets and x-c trail fees

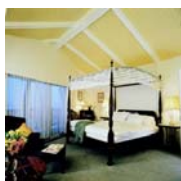
Payments Due: **\$150** at Signup

Balance Due: **\$385**. January 1, 2011

Cancellation: MLSC Policy will apply. Trip ins. available; recommended

Stowe, VT X-C/DH Combo

March 3 - 7, 2011



4-Nights, Long Weekend Bus Trip!

By popular request, we will be heading to beautiful Stowe, VT for FOUR nights again -- which means up to four whole days of skiing!! We will be staying at the Stowehof Inn, with its classic Alpine architecture! The Stowehof has an indoor pool, hot tub, sauna, and workout room. A full country breakfast is served each morning. Three dinners are included and one night will feature a fondue menu, which is a Stowehof specialty. For X-C skiers and snowshoers, Stowe is one of North America's premier x-c destinations! We'll go to the famous Trapp Family Lodge with a whopping 100 km. of groomed trails, as well as Stowe Mt. Resort with 42 km. There are also two more x-c places we'll check out AND a 5.5 mile town recreational path that is groomed for x-c skiers in the winter. Wow! For downhillers, Mt. Mansfield at Stowe has 48 trails and 13 lifts and is a GREAT mountain to ski -- MLSC has run many trips there in the past.

Sally's bus trips are well-known with shrimp cocktail and other delicious goodies on the way up and PLENTY of delicious home-baked cookies to enjoy throughout the weekend. Plus, no airport hassle, no luggage angst, no traveling on a weekend!! What could be a better deal!! Sally's trips always fill up quickly -- you "snooze", you lose!

- Dates:** March 3 - 7, 2011
- Trip Leader:** Sally Hilderbrand
712 Barrington Road
Collegeville, PA 19426
610-489-4718
shilderbrand@comcast.net
- Transportation:** Bus
- Departure:** 1:00 pm, Thursday, March 3rd
Marriott Courtyard, Valley Forge
- Lodging:** Stowehof Inn, Stowe, VT
- Return:** Monday, March 7th
Leave Stowe, 2:30 pm
- Cost/Member:** \$570 pp, dbl occupancy
- Includes:** Bus, Inn, 4 breakfasts, 3 dinners, Treats on bus trips, LOTS of cookies!
- NOT included:** X-C trail passes, DH lift tickets
- Deposit:** **\$150** due at sign-up
- Balance due:** **\$420, January 20, 2011**
- Cancellation:** MLSC policy applies.

Breckenridge, CO



Hyatt Main Street Station at night

March 5 to 12, 2011

Perfect Mountain - Perfect Mountain Town. We are staying at Hyatt Main Street Station - 300 yards to the lift, and a one-block walk to the shuttle stop to town. Hyatt Main Street Station consists of 50 luxurious studios, two and three bedroom residential-style units ideally located directly on Main Street in the heart of Breckenridge.

<http://hyattmainstreetstation.hyatt.com/hyatt/hotels/index.jsp>

Among resorts in Breckenridge, guests at the Hyatt Main Street Station have privileges at the Pioneer Club for a host of hillside amenities.

- Date:** March 5 to 12, 2011
- Leaders:** Glenn & Sally Price
1951 Colt Rd
Media, PA 19063
610-891-0929
Glenn@glenniprice.com
- Included:** Airfare, all ground transportation, lift tickets 5 out of 6 days, 3 bedroom 3 bath condos, welcome party at the lodge, wine and cheese party during the week, pre-trip and post-trip parties
- Lodging:** Hyatt Main Street Station
505 South Main Street
1 970 547 6015
- Depart:** United AL early Saturday, March 5th
- Return:** Southwest AL (?) mid-afternoon Saturday, March 12th
- Cost:** \$1,550 per person (dbl occ)
- Payments:** **Deposit:** \$500 at sign-up
Second: \$550. Nov. 15th
Balance: \$500 Dec. 31, 2010
- Cancellation:** MLSC policy applies. Trip insurance advised and available.

MLSC Cancellation Policy: Page 12

Explore Southern Africa with MLSC May 2011!!

MLSC members Jack Behrle and Wendy Wolf are planning a trip to South Africa in May 2011 and would love to have fellow MLSC'ers go with them. Tours will include Cape Town, Johannesburg, the Zambezi River in Zambia, Victoria Falls, and three separate tented camps in Botswana, visiting bush, dry and watered habitats. An additional option that Jack and Wendy are doing is a 4-day visit to Etosha Nat'l Park in Namibia (cost is extra).

Trip arrangements are being made through Premier Tours in Philadelphia. While the trip is a year away, the time to reserve is NOW since the camps where you will visit are small, intimate sites and can only accommodate a limited number of people.

Cost PER PERSON is either \$8895 (going to Etosha Nat'l Park) or \$8365 (excluding this option). Intra-Africa flights will be either \$1260 (with

Etosha) or \$965 (without Etosha). The cost of your flight to and from Africa is in addition.

For additional information about the trip with Jack and Wendy, you can **contact Jack at john.behrle@comcast.net** OR call Premier Tours at 215-893-9966 and ask for either Julian or Lisa. To reserve a space, a deposit of \$1600 is required. If you have ever wanted to go to southern Africa, but are reluctant to travel alone, **HERE IS YOUR CHANCE!!** Contact Jack or Premier Tours today!



**When signing up for a trip or activity, please fill out and include this reservation form along with your deposit made out to Main Line Ski Club.
(You must be a member of MLSC or an EPSC member club that offers reciprocity.)**

Main Line Ski Club Trip/Activity Reservation Form

Trip/Activity: _____

Date(s): _____

Name(s) (if couple): _____ Member: Yes No

_____ Member: Yes No

Note: Please use complete legal name(s) as cited on ID/Passport and print clearly.

Address: _____

Home Phone(s) _____

Work Phone(s) _____

Cell Phone(s) _____

Email(s) _____

Airline/Frequent Flyer #(s) _____

Emergency Contact/Phone: _____

Acknowledgement of Responsibility and Release of Liability

The Main Line Ski Club is a year-round social/sports club providing a variety of activities for its members. Most of its activities are, to varying degrees, hazardous. By assuming all risks involved, I agree not to hold Main Line Ski Club, its Officers, its Board Members or trip leaders liable for any accident or injury resulting from my participation in this Club activity. After reading, understanding and accepting the Release of Liability, I hereby make a reservation for this trip/activity.

Birth date required for all airline travel..... **MM/DD/YYYY**

Signed: _____ Date _____ Birthdate ____ / ____ / ____

Signed: _____ Date _____ Birthdate ____ / ____ / ____

Club Policy Regarding Cancellation

All cancellations must be received in writing by the trip leader. Cancellation penalties apply to all MLSC trips. Because of the complexity of financing most major trips, trip leaders establish their own cancellation and refund amounts and schedules according to the payment requirements of the airlines and trip providers. A minimum administrative fee of \$25 for weekend/bus trips and \$35 for major/airline trips is charged for any cancellation. In the event a cancellation occurs before a trip leaves and a replacement is found, deposits and payments will be refunded less the MLSC admin fee and any fees charged by the airline or tour provider. In the event a cancellation occurs before a trip leaves, and a replacement is not found, deposits and all payments may be forfeited. Any refund will be dependent on the payment and cancellation schedule with the airline, bus or accommodation or tour provider and any losses that may be incurred by MLSC. Please speak to your trip leader to make sure you understand this process before you sign up for any MLSC trip.

All individuals that participate in this adventure program (including skiing, hiking, biking and other such activities) do so at their own risk. Participant assumes the inherent risks associated with these adventure activities, which can be dangerous. Risks include such occurrences as altitude sickness, illness, disease, overexertion, broken limbs and alcohol consumption. By signing this document, I agree to take full responsibility for my own actions, safety and welfare.

Insurance: Travel Insurance is highly recommended. See your Trip Leader for details.

Main Line Ski Club Ski Trip Policy

RESERVATIONS AND DEPOSITS

Reservations will be accepted on a first-come first-served basis, as follows:

- **Only MLSC members may go on the trips.**
- Only MLSC members may sign up prior to or during the September general meeting
- **Members of other EPSC clubs may sign up only after the September general meeting has been held and must become members of MLSC.**

Reservations are confirmed only when a deposit and a signed reservation form and release of liability are received. The deposit amount is indicated in each trip's individual description. Separate payments are required for each trip and checks should be made payable to Main Line Ski Club. No cash payments can be accepted. To take advantage of the discount policy, when offered, payment in full must be received by the early payment date.

SURCHARGES

When a trip has reached its quota, a formal waiting list will be established requiring a \$25 per person deposit for weekend/bus trips and \$35 per person for major/airline trips. This deposit will be applied to the cost of the trip if a cancellation occurs and the wait-listed person is moved onto the trip. The deposit will be refunded in full if the wait-listed person is not called or if he or she cancels from the wait list prior to being called. However, if a person remains on the wait list, is called but decides they cannot go (for whatever reason) the deposit is forfeited.

CANCELLATIONS AND REFUNDS

All cancellations must be received in writing by the trip leader. Cancellation penalties apply to all MLSC trips. Because of the complexity of financing most major trips, trip leaders establish their own cancellation and refund amounts and schedules according to the payment requirements of the airlines and lodgings. A minimum administrative fee of \$25 for weekend/bus trips and \$35 for major/airline trips is charged for any cancellation.

In the event a cancellation occurs before a trip leaves and a replacement is found, deposits and payments will be refunded, less the MLSC admin. fee and any fees charged by the airline (if applicable). In the event a cancellation occurs before a trip leaves and a replacement is not found, deposits and all payments may be forfeited. Any refund will be dependent on the payment and cancellation schedule with the airline, bus or accommodation, and any losses that might be incurred by MLSC. Please speak to a trip leader to be sure you understand this process before you sign up for any MLSC trip.

ACCOMMODATIONS

All costs are for double occupancy unless otherwise noted.

Trip leaders have limited information available ahead of time as to room configuration and specific amenities. While we attempt to book equal facilities for all trip participants there can be discrepancies, with condos especially, from room to room. Please try to be flexible, but if there are major issues with your assigned place, talk to your trip leader immediately upon check-in.

DEPARTURES

Departure times listed in trip write-ups are subject to change, due to airline rescheduling. Be sure to communicate with your trip leader 2-3 weeks before your trip departs.

OTHER

Anyone under the age of 21 must be accompanied by an adult.

The Main Line Ski Club maintains a No Smoking policy for all trips. This includes bus, condos and parties.

Laptop computers should be used only during off hours so as not to tie up the telephone. People use the phone to make ski plans early in the morning and dinner plans late afternoon/early evening. Be considerate of your roommates/condo mates when using phone lines for computer purposes.

TRIP PARTICIPANTS ARE SOLELY RESPONSIBLE FOR CARING FOR THEIR OWN EQUIPMENT.

MAIN LINE SKI CLUB SUNDAY NIGHT TENNIS, 2010-11

When Sundays, Beginning September 12th , 4:30 – 6:30 p.m. thru May 1, 2011
Where Springton Tennis & Racquet Club, Rte. 252, Media (610) 356-2003
Cost: \$15/member; \$18/guest of member.
 Cost includes the courts, balls, and refreshments.

SUNDAY NIGHT FORMAT

On Sunday nights we play 4 courts/2 hours per week from 4:30 to 6:30 p.m. The format will be round robin, 4 half-hour sessions.

If the initial response to the Fall program warrants more courts or more hours, we will adjust the program accordingly.

"A-B" Players - Must have a Springton rating of 3.5 or better. The round robin schedule will be organized for maximum competitiveness, according to level of play.

"C" Level// Non-Rated Players - In weeks where there are enough to fill at least one court (4 players) or more, one court will be designated for this group.

To participate, mail the Mixed Doubles Round Robin reservation form, along with your check, **payable to Main Line Ski Club**, to:

Stacey Roehrs
 315 Spencer Road
 Devon, PA 19333

Free Rating Clinics

You are encouraged to have your level of play rated. Springton Racquet Club is providing free ratings clinics as follows: Thursday, September 9th at 1:30pm & 7:00pm; Saturday, September 11th at 12:00pm; Saturday, October 2nd at 12:00am. Ratings are also given the first Saturday of each month - October thru May

You must call 610-356-2003 in advance to register for the rating clinics.

Cancellation Policy:

If you find you cannot make a session you've signed up and paid for in advance, try to arrange for your own sub and have them reimburse you. If you cannot find a sub, PLEASE contact the coordinator as early as possible so they can try to fill your spot. If the coordinator finds a sub for you, you will be eligible for a make- good session. If no sub is found, no refund or make-good session will be given.

Main Line Ski Club Tennis Coordinators 2010-2011 Season

		Home Phone	Work Phone
Overall Tennis Coordinator	Stacey Roehrs	610-804-5891	610-363-7999
A/B Group Coordinator	Stacey Roehrs	610-889-9086	610-363-7999
C Group Coordinator	Sue Kapusta	610-284-1069	610-626-1400 x312
Hilton Head Coordinator	Chris Cobb	610-308-2468	
Ski Club Meeting Spokesperson	Cindy Doan	610-642-0746	215-255-1760

MLSC
TENNIS 2010 – 2011 CONTRACT SIGN-UP
SUNDAY EVENING MIXED DOUBLES ROUND ROBIN
(Circle below all dates that you wish to play)

Mail this form—along with your check payable to Main Line Ski Club—to:

Stacey Roehrs 315 Spencer Road Devon, PA 19333	Per Session: \$15/member; \$18/non-member Cost includes the courts, balls, and refreshments.
--	---

NAME: _____

ADDRESS: _____

DAYTIME PHONE: _____ **EVENING:** _____

E-MAIL ADDRESS: _____

Level of Play (Check One): A B C

2010				2011				
SEPT	OCT	NOV	DEC	JAN	FEB	MAR	APR	MAY
	3	7	5	2	6	6	3	1
12	10	14	12	9	13	13	10	
19	17	21	19	16	20	20	17	
26	24	28	<input type="checkbox"/>	23	27	27	<input type="checkbox"/>	
	31			30				

Note: No tennis scheduled: December 26, 2010 Christmas break and April 24, 2011 Easter

Cancellation policy If you find you cannot make a session you've signed up and paid for in advance, try to arrange for your own sub and have them reimburse you. If you cannot find a sub, PLEASE contact the coordinator as early as possible so they can try to fill your spot. If the coordinator finds a sub for you, you will be eligible for a make good session. If no sub is found, no refund or make-good session will be given.

Acknowledgement of Responsibility and Release of Liability

The Main Line Ski Club is a year-round social/sports club providing a variety of activities for its members. Most of the activities are, to varying degrees, hazardous. By signing up for this trip/activity, I voluntarily assume the risks involved. By assuming all risks involved, I agree not to hold Main Line Ski Club, its officers or board members, or trip leaders, liable for any accident or injury resulting from my participation in this club activity. After reading, understanding, and accepting the Release of Liability, I hereby make a reservation for this trip/activity.

Signed: _____ **Date:** _____

Main Line Ski Club Annual Membership Form 2010-2011

Please print legibly:

Member Name: _____

(For Renewals, please include CHANGES ONLY)

Address: _____

Home Phone: _____ Work Phone: _____ Cell Phone: _____

Additional Family Members: _____, _____, _____

E-mail (Print very clearly, please) : _____

Preferred Method of Receiving Ski Tracks E-Mail US Mail *

* Please include a \$20.00 surcharge to receive the newsletter by US Mail.

Interests: Skiing: Eastern Western European Cross Country
Sports: Tennis Biking Hiking Snowshoeing
Socials: Parties Wine & Dine Culture Events/Museums

I would like to help with the following Committee(s)

- Activities Committee
- New Members Committee
- Publicity Committee
- Technical Support Committee
- I am interested in being trained as a possible ski trip leader.

What improvements would you like to see in the Club?

Suggestions for any particular trips or activities: _____

Acknowledgement of Responsibility and Release of Liability

The Main Line Ski Club is a year-round social/sports club providing a variety of activities for its members who must be 21 years of age or older. Most of the activities are, to varying degrees, hazardous. By making this application for membership, I / We voluntarily assume the risks involved. By assuming all risks, I / We agree not to hold the Main Line Ski Club, its officers or board members liable for any accident or injury resulting from my/our participation in a club activity. After reading and understanding this Release of Liability, I / We hereby apply for membership in the Main Line Ski Club.

Member Signature: _____ Date: _____

2nd Adult Family Member Signature: _____ Date: _____

Individual Membership - \$35 * Couple/Family Membership¹ - \$45 *

*** For those electing to receive the Newsletter by US mail add a \$20.00 surcharge to the cost of dues.**

Please return the completed form along with your check, payable to Main Line Ski Club, to:

**Linda LaChapelle, 1 Braxton Road, Rosemont, PA 19010
Membership year expires September 30th.**

¹ 'Family Membership' includes couples living together and all children under the age of 26 living with them.

Linda LaChapelle
1 Braxton Road
Rosemont, PA 19010

Main Line Ski Club

Fall - Winter 2010 / 2011 Calendar of Activities

Take a look, then MARK your CALENDARS **NOW** so you don't forget!!

Sun., Nov. 7th	Movie 'n Munch—KOP Mall
Tues., Nov. 9th	General MLSC Meeting, Crowne Plaza, KOP
Fri., Nov. 12th	Happy Hour at 'The Paddock' —Strafford
Sun., Nov. 14th	Annual Wine & Cheese—Newtown Square
Sat., Nov. 20th	Wine 'n Dine at High Street Caffe—West Chester
Thur. —Sun., Nov. 25—28th	Thanksgiving Holiday Weekend
Sun., Nov. 28th	Post-Thanksgiving Hike in VF Park
Fri., Dec. 3rd	Wine & Dine Victorian Christmas in Malvern
Tues., Dec. 14th	General MLSC Meeting, Crowne Plaza, KOP
Wed., Dec. 15th	PSC Holiday Happy Hour—Cynwyd Club
Fri., Dec. 17th	Happy Hour at The Paddock—Strafford
Sat., Dec. 18th	MLSC & PCS Holiday Gala—KOP
Sun., Jan. 2nd	"Hair of the Dog "Wine & Dine—Winberie's
Mon., Jan. 3rd	EPSC's Learn-to-Ski Program—Spring Mtn.
Sun., Jan. 9th	Winter Walk & Picnic—Collegeville