



# SKI TRACKS

Volume 51, Issue 3

October 2010

<http://www.mainlineskiclub.com/>

In This Issue	Page
2011 Ski Trips .....	1
MLSC Board .....	2
With Warmest Thanks.....	2
Ridley Creek Blazed Trail Hike .....	3
Wine 'n Dine Trattoria Giuseppe – Newtown Sq.....	3
Happy Hour at The Paddock—Strafford .....	3
Murder Mystery Dinner Theater—Ardmore .....	4
Activities Meeting—Collegeville.....	4
Valley Forge to Fitzwater Station Bike/Picnic .....	4
* Laurel Hill Cemetery Flashlight Tour—Phila .....	4
Movie & Munch .....	5
Happy Hour at The Paddock—Strafford .....	5
Annual Wine & Cheese—Newtown Square .....	5
Wine 'n Dine High St Caffe—West Chester.....	6
Post-Thanksgiving Valley Forge Hike .....	6
Ski Trips .....	7-10
Explore Southern Africa .....	10
Trip/Activity Reservation Form.....	11
Ski Trip Policy .....	12
Tennis Info and Schedule, Signup Form.....	13-14
Annual Membership Form.....	15
Calendar .....	16

\* Indicates CC Phila.-oriented event

## Welcome to Newcomers!!

Tuesday, October 12<sup>th</sup>

7:30 p.m.

All newcomers and prospective members are invited to an informal gathering at the beginning of each monthly meeting. Starting at 7:30, we will be meeting each other as well as learning about all the ski club has to offer!! We all know that MLSC is a lot more than ski trips!!

Look for the round table by the sign-in table next to the entrance to the meeting room. Sea Kaplan and Rosemarie Romano, New Member/Hospitality Co-chairs, will be conducting these informative and welcoming sessions. If newcomers have questions, call Sea at 610-722-9907 or Rosemarie at 610-688-6192.

MLSC members: tell your friends and co-workers all about MLSC and to come out for this event.

### MLSC Center City Monthly Meetings Discontinued

The Main Line Ski Club Center City monthly meetings will be discontinued due to inconsistent participation. **Philly Meetup website will continue.**

## Monthly Meeting & Social

Tuesday, Oct. 12<sup>th</sup>

7:30 pm

*Crowne Plaza Valley Forge, KOP*



Our October meeting is Oktoberfest! Come out and visit with your old friends and meet some new ones. If you haven't signed up for a winter ski trip, now is your chance, as all the trip leaders will be on hand to profile their trips again. Pretzels and German beer at the cash bar will complement the colder weather and get us in the mood for another great ski season. Learn about all of our upcoming activities and sign up for our Sunday indoor tennis group.

A special bonus will be a presentation by our own John Kapusta, a personal fitness trainer, who will instruct us in exercises we can do to prepare us for this winter's ski season.

So come out and join us and get ready to get those legs in shape! The Crowne Plaza is located on Mall Boulevard directly across from the King of Prussia mall.

## 2011 SKI TRIPS:

The following chart displays the destinations, dates, and leaders of these trips. See the details starting on page 7.

Destination	Dates	Leaders
Park City, Utah	1/8 - 1/15	Howard & Kathleen Weisz
Lech, Austria with side trips to Berlin and Dresden	1/28 - 2/9	Jack Behrle
Greek Peak, NY	2/24 - 2/27	Bob Campbell
Stowe, Vermont	3/3 - 3/7	Sally Hilderbrand
Breckenridge, CO	3/5 - 3/12	Sally & Glenn Price

## MLSC BOARD 2009 – 2010

### PRESIDENT

Howard Weisz. 610-918-3780  
e-mail [hweisz@aol.com](mailto:hweisz@aol.com)

### VICE PRESIDENT

Fletcher Swanson 610-431-1850  
e-mail [fswanson@rcn.com](mailto:fswanson@rcn.com)

### SECRETARY

Sally Swanson 610-431-1850  
e-mail [fswanson@rcn.com](mailto:fswanson@rcn.com)

### TREASURER

Frank Milotich 610-356-5761  
e-mail [fmilo@verizon.net](mailto:fmilo@verizon.net)

### MEMBERSHIP

Linda LaChapelle 610-527-2287  
e-mail [LindaLa2ski@verizon.net](mailto:LindaLa2ski@verizon.net)

### SKI TRIPS

Kathleen Weisz 610-918-3781  
e-mail [kqweisz@aol.com](mailto:kqweisz@aol.com)

### NEWSLETTER/GROUP EMAIL

Carolyn Bringhurst 610-889-2434  
e-mail [cbring12@msn.com](mailto:cbring12@msn.com)

### NEW MEMBERS/HOSPITALITY

Sea Kaplan 610-722-9907  
e-mail [Seakaplan11@gmail.com](mailto:Seakaplan11@gmail.com)

Rosemarie Romano 610-688-6192  
e-mail [rr614@aol.com](mailto:rr614@aol.com)

### TENNIS

Stacey Roehrs 610-889-9086  
e-mail [staceyroehrs@roehrs.com](mailto:staceyroehrs@roehrs.com)

### WEB SITE LIAISON

Glenn Price 610 891 0929  
Email [glennjprice@glennjprice.com](mailto:glennjprice@glennjprice.com)

### EPSC/RACING TEAM

Pam DeCampi 610-356-1390  
e-mail [pdecamp1@hotmail.com](mailto:pdecamp1@hotmail.com)

### ACTIVITIES

Sally Hilderbrand 610-489-4718  
e-mail [shilderbrand@comcast.net](mailto:shilderbrand@comcast.net)

## Message from the Prez



I know we are all looking forward to skiing this coming year. Sign-ups were slow at the September meeting, but time is fleeting, so get your checks into the trip leaders. Get your skis tuned and get ready to GO!

Also, at the September meeting I forgot to sell tickets for the Eastern Pennsylvania Ski Council's Silent Auction on Friday November 5<sup>th</sup> at the Clarion Park Hotel Park Ridge, 480 North Gulph Road in King of Prussia. Tickets are \$25 before October 25<sup>th</sup> and \$30 at the door. The event includes a cash bar and many food stations. Please call me at 610-918-3780 for tickets.

Also, per the revised bylaws, we were supposed to give a report of our Profit & Loss statement for 2009-2010. We had a loss of \$3,757; the Board had budgeted to subsidize the Fiftieth Anniversary bash by \$3,000, so our financial results for the year were OK.

Many of you are aware that long-time board member Frank Cressman has been battling lung cancer this summer. We saw him at the Lobster Feast on August 7<sup>th</sup>. He was finished with radiation and chemo, looked good and felt good. Since then cancer has migrated to his brain. We will keep you apprised of his condition.

Pam DeCampi will be our new ESPC/Racing Team Representative.

At the September meeting I mentioned Glenn Elliott's accident. His wife, Janet, has resigned all of her MLSC and most of her EPSC duties. I also asked if anyone was willing to take over the Winter Park trip they were going to lead, February 12-19, 2011. Unfortunately we had no takers, so we are canceling the Winter Park Trip.

Factoid of the month: Michael Jordan makes more money from Nike annually than all the Nike factory workers in Malaysia combined. The three wealthiest families in the world have more assets than the combined wealth of the forty-eight poorest nations. Way to go Sam (Walton) and Warren (Buffet); they may not be in the top three, but close to it.

*Howard*

**Members don't forget! You must have renewed by September 30<sup>th</sup>.  
Form on Page 15.**

## Warmest Thanks!!!

A **VERY LARGE Thank You** to Valerie Shinbaum for arranging the Wine & Cheese at the Greene Countrie clubhouse. Only a resident can sponsor an event at the clubhouse so we are MOST grateful to her for suggesting this location AND meeting us there to check it out and deal with the management. You're a lifesaver, Valerie!!

Very **WARMEST THANKS** to September's activity leaders -- Valerie Shinbaum for the Sept. 12<sup>th</sup> walk around Ridley Creek State Park, Rich Schonwald for the Happy Hour on Friday, September 17<sup>th</sup>, and Terri Branca for the Hands-on Italian Cooking Class at the Kitchen Workshop in Paoli on September 18<sup>th</sup>. We couldn't do it without you, folks! ☺ By the way, seven folks attended the Italian Cooking Class, and it was a really, really, REALLY fun...and DELICIOUS evening!! Special thanks, Terri, for all of your hard work putting this together!

## Liberty Bell Icon!!

*Center City events are marked with a Liberty Bell icon.*

## Ridley Creek Blazed-Trail Hike

Sunday, Oct. 3<sup>rd</sup>

1:30 pm

Joint event with Chester Co. Trail Club



Join us at 1:30 p.m. for a four-mile hike led by Jim Sayne along a blazed trail through the woods in Ridley Creek State Park. We will be hiking with members of the Chester Country Trail Club so it's an opportunity to see new faces and meet new friends as well as get some exercise. This is an anniversary hike for the trail club, so after the hike you can stay for snacks, beverages, and anniversary cake if you want. Email Jim at [jimsayne@yahoo.com](mailto:jimsayne@yahoo.com) to reserve and be sure to identify yourself as part of MLSC. You can also call Jim at 610-222-0413. Wear hiking boots and bring water.

**Directions to meeting place:** From Paoli, go south on 252 to Newtown Square. At the 2<sup>nd</sup> light after Rte 3, turn right on Bishop Hollow Rd west to Gradyville Rd. Turn right and then left on Sandy Flash Road (park entrance gate) and follow signs to Pavilion #8.

## Wine 'n Dine Trattoria Giuseppe, BYOB

Saturday, Oct. 9<sup>th</sup>

6:45 pm Arrive; 7:00 pm Seated

Edgemont (Newtown Square)



Come join us as we return to Trattoria Giuseppe, a wildly popular BYOB on West Chester Pike in Edgemont. Critics say the food is out of this world while the prices are down to earth! Main Line Today says "the service is great and the atmosphere is beautiful...plus the portions are huge, delicious and very affordable." Recommended: the eggplant appetizer which could double as an entrée.

The owner, Giuseppe Musso, has designed this restaurant to be reminiscent of his past experience as a chef in Sicily. He prides himself on his sauces, spices and specialties. He says he was going for the

feel of a restaurant in a Sicilian piazza. It looks like he did it. With authentic Italian clay tile, wrought iron, marble and wood combined with stone and stucco, you'll feel like you're having a momentous dining experience in Italy.

Most entrees are \$15-18; with pastas as low as \$7.

Check out their website at: [www.mussotra.com](http://www.mussotra.com) to read more about their history and menu. The restaurant is located at 4799 West Chester Pike, Edgemont inside the Edgemont Theatre complex on Route 3. Parking is free.

The cost will be the cost of your dinner plus 25 % added for tip and tax. We'll have one bill which we will pay, you pay us cash! RSVP: Please contact Kathleen Weisz at 610-918-3781 (or [kqweisz@aol.com](mailto:kqweisz@aol.com)) by Friday, October 1 to reserve a seat for dinner; we can take 10 people maximum so call early. Mangia!

## Happy Hour at The Paddock - Strafford

Friday, Oct. 15<sup>th</sup>  
5 to 7 pm



We will continue to have our Happy Hour at the Paddock. Most people arrive around 6:00 and HH ends at 7:00. There is a bar menu for \$5, which might be ample and some discounted drinks. So come out, bring a friend, and join in the libations and camaraderie. (Note we have been able to have the background music lowered.) See you there.

**Directions:** The Paddock is on the NW corner of Lancaster Ave. and Old Eagle School Road in Strafford. For information or if you have questions contact Rich Schonwald (610-356-2936) OR email him at [rschonwald@verizon.net](mailto:rschonwald@verizon.net). Hope to see you there!!

## Murder Mystery Dinner Theater

Saturday, Oct. 16

6:00 pm - Ardmore



You have heard about the Murder Mystery Dinner Theater nights— You have dinner while determining who was killed, and who did the muuurrrder. We have set up one locally in the Primevera Pizza Kitchen, 7

East Lancaster Ave, Ardmore PA 19003; 610-642-8000 ( Rt 30 at Suburban Square)

The venue is a former Bank Building, and we will be dining next to the vault (wine cellar). Choice of three entrees: Grilled Salmon, Chicken Marsala or Veal Parmigiana with Caesar Salad or Insalata Mista and Cheesecake or Tiramisu Cannoli. It may be a skiing theme, that's a mystery.

The play, dinner, tax & tips all for \$45.00 pp. Cash Bar.

**Checks made out to MLSC will reserve your spot.**

Space limited to 30 persons. Mail to Bob Campbell, 16 E. Stewart Ave, Lansdowne, PA 19050.

Cell 215-327-8499 [bobsdesigns@verizon.net](mailto:bobsdesigns@verizon.net) by

**Wednesday, October 13<sup>th</sup>**. Come with a thinking cap.

## Activities Meeting

Thursday, Oct. 21<sup>st</sup>

7:30 pm

Collegeville



It may be fall, but the Activities Committee is thinking WINTER and even early spring!! We will be finalizing December events, and then planning January through April. In addition, we will be making plans for the November Wine & Cheese. New activities and ideas are ALWAYS appreciated so come and give your input!! ALL are welcome! We try to not only plan but have a good time as well.

We will be meeting at Sally Hilderbrand's home in Collegeville. For directions, email her at [shilderbrand@comcast.net](mailto:shilderbrand@comcast.net) OR give her a call at 610-489-4718. Hope to see you there!

## Valley Forge to Fitzwater Station, Phoenixville Bike Ride & Picnic

Sunday, Oct. 24<sup>th</sup>

3:30 pm



We will meet at the Betzwood parking lot area, Valley Forge Park that starts many of our bike rides, and then bike on the PAVED Schuylkill Trail to Phoenixville's Fitzwater Station restaurant on the Canal. We will then order sandwiches to go while perhaps having refreshing drinks on the deck. While relaxing, we can

watch the kayakers and canoe folks navigate the canal! We will then bike with our sandwiches to Lower Perkiomen Park on the Trail and eat on the banks of the Perkiomen Creek. When we return to the Valley Forge parking area, we'll have a home-baked dessert, Sally's treat!

Bring a bike in good working condition, plus a helmet and water and money for sandwiches. Contact Sally Hilderbrand at 610-489-4718 or email her at [shilderbrand@comcast.net](mailto:shilderbrand@comcast.net) to let us know that you are coming. (Be sure you get a reply to ensure your email has been received.) Total mileage is about 14-15 miles and it's ALL flat!☺ Alas, cancelled in the event of rain/threatening weather.

## Laurel Hill Cemetery Flashlight Tour



Saturday, Oct. 30<sup>th</sup>

8:00 pm

Philadelphia

Whooo-oo-oo!! Let's get in the Halloween spirit with a flashlight tour of Laurel Hill Cemetery!!! Laurel Hill is a National Historic Landmark that was founded in 1836 and was one of the first burial places planned to look like a garden with lots of trees, plants, and pathways. It is also one of the very few cemeteries that is not in a churchyard, which allowed the burial of people of different religious backgrounds. You will find familiar Philadelphia names here -- Rittenhouse, Widener, Elkins, and Strawbridge...but you'll also find General Meade and 39 other Civil War-era generals and six Titanic passengers.

We will have a cemetery guide at 8 p.m., and the tour takes one hour. Along the way you will meet some of the most "restless spirits" portrayed by local "not ready for the afterlife" actors! The cost is \$20 per person and also includes cookies, hot cider, and other treats served afterwards. Each person needs to bring a FLASHLIGHT and to dress comfortably for the weather!! Our leader is Howard Weisz -- email Howard at [hweisz@aol.com](mailto:hweisz@aol.com) OR phone him at 610-918-3780. We need to let the cemetery know if our group is more than 10 so please let Howard know of your interest as early as possible.

You can find more information about the cemetery at [www.thelaurehillcemetery.org](http://www.thelaurehillcemetery.org).

**Directions to Laurel Hill:** Take the Schuylkill Expressway to Exit 340A Kelly Drive/Lincoln Dr. Exit. Stay in the far left lane and follow signs for Ridge Avenue: East/Kelly Drive/East River Drive. At the bottom of the exit ramp go straight on Kelly Drive to the third light, South Ferry Road, and turn left. Turn right immediately at the first light onto Ridge Avenue. Continue approximately ¼ mile to the entrance of the cemetery on your right, through the arch of the

historic gatehouse. Laurel Hill is in the East Falls section of the city and for you GPS'ers, the address is 3822 Ridge Avenue, Philadelphia 19132.

**Movie 'n Munch -  
King of Prussia Mall  
Sunday, Nov. 7<sup>th</sup>  
Approximately 4 p.m.**



Join MLSC for an afternoon movie and casual dinner to follow. We'll meet at the King of Prussia movie theater (near Champs and Bahama Breeze on Mall Boulevard). This theater is a multiplex so there are lots of choices. I will send out an email the day before (11/6/10) when the weekend selections come out so you'll know times and choices. We'll meet in front of the theater and after the movies we'll go for dinner at one the many places to choose from at the mall.

To make a reservation contact Valerie Shinbaum at [take1joy@yahoo.com](mailto:take1joy@yahoo.com), or call 610 322 7829. Email would be preferable so that you can be sent email about the movie choices. Please make a reservation **by Friday November 5**, so Valerie has an idea of how many people to look for on Sunday. Looking forward to film and food - great combination!

**Happy Hour at The  
Paddock - Strafford  
Friday, Nov. 12<sup>th</sup>  
5 to 7 pm**



We will continue to have our Happy Hour at the Paddock. Most people arrive around 6:00 and HH ends at 7:00. There is a bar menu for \$5, which might be ample and some discounted drinks. So come out, bring a friend, and join in the libations and camaraderie. (Note we have been able to have the background music lowered.) See you there.

**Directions:** The Paddock is on the NW corner of Lancaster Ave. and Old Eagle School Road in Strafford. For information or if you have questions contact Rich Schonwald (610-356-2936) OR

email him at [rschonwald@verizon.net](mailto:rschonwald@verizon.net). Hope to see you there!!

**Annual Wine &  
Cheese at Greene  
Countrie  
Clubhouse,  
Newtown Square  
Sunday, Nov. 14<sup>th</sup>  
4:00 to 7:00 pm**



The Annual Wine & Cheese is MLSC's BIGGEST social event of the year so you don't want to miss it!! Last year we had a record-breaking 127 people attend -- will we get even MORE folks this year??? This year we will NOT be in a private home but in the clubhouse of Greene Countrie Village in Newtown Square. Meet new friends as well as renew old friendships while enjoying delicious hors d'oeuvres and wine/beer/soda. FYI the Eagles play on Monday night this week so there won't be any football distraction!

The cost is **\$15** for members, **\$25** for non-members payable at the door (please be SURE to bring cash!!!). This is a good deal since you undoubtedly won't need to eat any dinner!! You don't need to pay in advance but you DO need to make a reservation by FRIDAY, Nov. 12th to Sally Hilderbrand, 610-489-4718 or via email at [shilderbrand@comcast.net](mailto:shilderbrand@comcast.net). Please note that reservations are a MUST!!!

**Directions to Greene Countrie Club House:** From Rt. 30 in Paoli, go SOUTH on Rt. 252 towards Newtown Square for 4.8 miles. At the **Goshen Rd** traffic light, turn LEFT. Proceed 0.7 miles and turn LEFT onto **Earles Lane**. The clubhouse will be on your LEFT in 0.6 miles. (You'll proceed through one stop sign on the way.)

**PARKING** is limited to about 20 cars in the clubhouse parking lot, and we urge everyone to carpool as much as possible. You can also park on the right side of Earles Lane OR turn into the development across from the clubhouse and park there.

## Wine 'n Dine at High Street Caffe

Saturday, Nov. 20<sup>th</sup>

7:00 pm

West Chester, PA



Come join MLSC for dinner at the High Street Caffe (not café) located at 322 S. High Street in West Chester. This casual eclectic place features Cajun, Creole and exotic cuisine, according to their website.

Check [www.highstreetcaffe.com](http://www.highstreetcaffe.com) out for more info on the food and beverage lists. Jambalaya, étouffe, blackened fish and chicken, lots of different seafood entrées, and there's an artichoke appetizer that's one of my personal favorites! The prices are reasonable, and there are lots of great menu choices as well as specials to choose from. The food is well prepared, portions are generous, service is attentive, and the atmosphere is lively. The restaurant has a liquor license but they also allow BYOB for wine ONLY with a \$5 corkage fee, so up to you if you want to bring your own wine.

Please bring cash to pay the bill, plan on an extra 26% for tax and tip. There is a small parking lot behind the restaurant; otherwise, look for street parking around the restaurant. There will be room for 10 people at this dinner. Contact Valerie Shinbaum at [take1joy@yahoo.com](mailto:take1joy@yahoo.com), or 610 322 7829 by **TUESDAY, November 16<sup>th</sup>** to reserve your space.



**Thanksgiving Holiday Weekend  
November 25-28  
Have a happy holiday!**

## Post-Thanksgiving Hike in Valley Forge Park

Sun., Nov. 28<sup>th</sup>

1:30 pm



Eat too much for your Thanksgiving dinner?? Want to get in shape for the upcoming December holidays?? Tired at the thought of holiday shopping?? Well, here's the perfect remedy! Come out for a "short and sweet" hike that's one of our favorites and is very scenic even in late-November! Total of four miles so it's just the right length for a pleasant way to get some exercise and fresh air and renew your spirit for the upcoming holidays!!

Meet in the parking lot of Knox's headquarters on Rt. 252 close to the covered bridge. We follow the path along the creek, over Valley Creek via the "hidden" bridge and then head up Mount Joy for some delightful views. Finally we complete our loop back to the parking lot. Jim Sayne will lead this hike. Please contact Jim at [jimsayne@yahoo.com](mailto:jimsayne@yahoo.com) or 610-564-3590 if you plan to attend. The hike will be cancelled in the event of rain/bad weather.

# THINK



# SNOW

## Park City, Utah - Downhill



**January 8-15, 2011**

When it comes to perfect powder, it's hard to beat Park City, Deer Valley & the Canyons! Critics say this 3-mountain resort is blanketed with the "Greatest Snow on Earth"! We'll ski all three mountain resorts (Park City, Deer Valley and the Canyons). We're staying at the popular Peaks Hotel on Park Avenue. Each unit has a king or queen bed for couples, or two twins for singles, all with wireless Internet access, coffeemaker, iron, hairdryer and in-room safe. We walk out in the morning and hop on our free shuttle to the mountain of our choice.

We get a **free gourmet breakfast daily** (we'll plan our day), plus free cookies and hot chocolate delivered to our rooms après ski. Then we'll meet in the upstairs Sports Bar & Grille to make our dinner plans, (including a big group dining event in their formal dining room one night.) Other amenities include: a large heated outdoor pool and indoor heated pool, large hot tub, and dry sauna, plus free ski storage. We'll have all kinds of special events including our Pre and Post-Trip Parties at our house, and on site a Free Welcome Party by the hotel, plus two free Leaders wine 'n cheese parties on site. Plus, an extra added attraction: Sue & Chase McDaniel have offered to host our whole group for an elegant cocktail party at their gorgeous Presidential Condo Suite at the "Westgate Park City" at the Canyons. You don't want to miss that!

- Dates:** January 8-15, 2010 (Saturday to Saturday)
- Trip Leaders:** Kathleen & Howard Weisz  
1210 Winthrop Circle  
West Chester, PA 19380  
610-918-3781  
[kqweisz@aol.com](mailto:kqweisz@aol.com)
- Departure:** Sat. Jan. 8<sup>th</sup> Lv PHL approx 7:20 am on Delta Flight TBD  
Arr SLC 10:17 am approx.
- Lodging:** Park City Peaks Hotel  
2121 Park Avenue  
Park City, Utah 84060  
435-649-5000
- Return:** Sat., Jan. 15<sup>th</sup> Lv SLC approx 10:05 am on Delta Flight TBD  
Arr PHL at 4:39 pm approx
- Cost/Member:** Total Package: \$1395 approx/pp (dbl occ);
- Included:** Air, Ground Transportation to/from Hotel, Welcome Party, On site Leaders Parties, 5- of 7-Day Lift Tickets (3 for Park City; 1 for Deer Valley, 1 for the Canyons).

- NOT included:** Meals (except free breakfast)
- Payments:** **\$500** due on **Signup**,  
**\$500** due **October 12<sup>th</sup>**  
**\$395** Bal. due **November 9<sup>th</sup>**
- Insurance:** Available on Signup and Recommended
- Cancellation:** MLSC Policy will apply.

## Lech, Austria, plus Berlin, Dresden



**January 28 – February 9, 2011**

This year's adventure takes us to the famously posh resort of Lech, Oberlech and Zurs and then on to Berlin via private motor coach for four nights! As many of you may know, the Arlberg region of Austria is a Club favorite, and this is our first visit to the beautiful Hotel Elizabeth in Lech!

We arrive on Saturday afternoon direct from Munich and will ski Sunday thru Friday, departing on Saturday by motor coach direct to Berlin. **We are accepting reservations beginning now.** If you wish to use your frequent flyer points, or make your own air arrangements, the cost of this trip is \$2090. With all airfare, the total cost is \$2990. **MLSC members ONLY.** Interested? **Call or email Jack Behrle for more details!**

- Dates:** Friday, January 28,  
Returning February 9, 2011
- Trip Leader:** Jack Behrle & Wendy Wolf  
105 Laurier Place,  
Bryn Mawr, PA 19010  
610/520-1855 or 508/645-3689  
(Before 9/16)  
[john.behrle@comcast.net](mailto:john.behrle@comcast.net)
- Transportation:** USAirways 706 direct from Phila. Int'l to Munich, arriving at 8.25AM. We return home from Berlin on Lufthansa 179 at 9:15AM, connecting in Frankfurt with USAir 701 departing at 12:45PM, arriving in Philly at 3:45PM. Included is private motor coach between Munich and Lech, Lech itself, and then Berlin, and finally on to Berlin airport for departure.
- Departure:** Friday evening, 1/28, at 6:10PM from Phila. International
- Lodging:** Four \*\*\*\* Hotel Elizabeth, in Lech. Full buffet breakfast and full 5-course dinners included daily. Full amenities including spa, pool, full bar/lounge and incredible ambiance!

In Berlin, we are staying at the 4\*\*\*\* Crowne Plaza City Center for four nights, returning to Philly on the afternoon of February 9.

**Cost/Member:** \$2,990.00, pp, double occupancy, including all air. (No air—deduct \$900.00 pp.) Two single rooms are also available! Please inquire.

**Special Note:** **This trip is available only to MLSC members, and Eastern PA Ski Council (EPSC)-affiliated clubs. We only have room for 35 so please do not hesitate!! After that point, a waiting list will be maintained.**

**Includes:** Breakfast and dinner daily (Lech), 7 nights lodging at the Elizabeth, Nightly entertainment (Lech), round trip airfare, taxes, tips and fees, 4 nights in Berlin, Buffet Breakfasts (Berlin), Arrival Reception, Pre- and Post-Trip Gatherings, Private walking tour of Berlin, All fuel surcharges, airport taxes. All prices are guaranteed firm regardless of Euro valuation.

**NOT included:** Lift tickets (currently 208 Euro for 6 days), meals on the mountain, optional guided ski tours, day trip to Dresden via rail

**Deposit:** \$500.00 due upon reservation with completed trip form

**Next Payment:** \$800 due **September 30**, 2010

**Final Balance:** Due on **December 15**, 2010 (Amount dependent on air arrangements).

**Cancellation:** MLSC Policy will apply. Trip insurance available and recommended.

**Links:**

[http://www.hotelelisabeth.com/index\\_e.htm](http://www.hotelelisabeth.com/index_e.htm)  
<http://www.cp-berlin.com/>

## Greek Peak, NY, DH Combo

Feb. 24 – 27, 2011



Snow tubing

### 3-Nights, Long Weekend Bus Trip

Located in NY's famous Snow Belt, Greek Peak (3-1/2 hrs away) has been making memories for over 50 years. With a 952 ft vertical, three Terrain Parks, ample terrain suited for every ability & interest, Greek Peak has long been the destination for fun seekers. Greek Peak's grooming & snowmaking are second to none, and with 32 trails of varied terrain, from treed glades & cruising runs to the steep ones, everyone in the group will be smiling from start to finish.

The best of all worlds: Alpine & X-country Skiing, Boarding, Skating, Tubing, Snowshoeing, Ice Skating. Cost includes Hope Lake Lodge room (dbl occ), Coach w/Snacks & drinks, 3 Bkfasts, 1 Dinner, taxes & tips.

The Nordic pass is \$9.00 pp on Fri, and \$14.00 pp Sat & Sun (for a total 3-Day Nordic for \$37 pp). Three-day Alpine lift ticket is \$95.20 pp.

A luxurious state-of-the-art spa with custom services, an extensive water park and an indoor/ outdoor hot tub complete the excitement. Hope Lake Lodge is impressive and state of the art (opened in Dec. 2009).

Join the fun. Sign up early.

**Dates:** February 24 - 27, 2011

**Trip Leader:** Bob Campbell  
16 E. Stewart Ave  
Lansdowne, PA 19050  
[bobsdesigns@verizon.net](mailto:bobsdesigns@verizon.net)  
Cell 215-327-8499

**Transportation:** Bus

**Departure:** 5:30 pm, Thursday, 2/24 via Perkiomen Coach

**Lodging:** Hope Lake Lodge

**Return:** Sunday, 2/27  
Depart Greek Peak at 4 pm,

**Cost/Member:** \$535 pp (dbl occ.) **plus** Lift Tickets

**Included:** Bus, Inn, 3 breakfasts, 1 dinner, snacks and drinks on bus

**Not Included:** Lift tickets and x-c trail fees

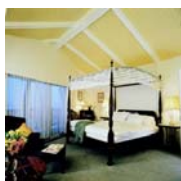
**Payments Due:** **\$150** at Signup

**Balance Due:** **\$385**. January 1, 2011

**Cancellation:** MLSC Policy will apply. Trip ins. available; recommended

# Stowe, VT X-C/DH Combo

March 3 - 7, 2011



## 4-Nights, Long Weekend Bus Trip!

By popular request, we will be heading to beautiful Stowe, VT for FOUR nights again -- which means up to four whole days of skiing!! We will be staying at the Stowehof Inn, with its classic Alpine architecture! The Stowehof has an indoor pool, hot tub, sauna, and workout room. A full country breakfast is served each morning. Three dinners are included and one night will feature a fondue menu, which is a Stowehof specialty. For X-C skiers and snowshoers, Stowe is one of North America's premier x-c destinations! We'll go to the famous Trapp Family Lodge with a whopping 100 km. of groomed trails, as well as Stowe Mt. Resort with 42 km. There are also two more x-c places we'll check out AND a 5.5 mile town recreational path that is groomed for x-c skiers in the winter. Wow! For downhillers, Mt. Mansfield at Stowe has 48 trails and 13 lifts and is a GREAT mountain to ski -- MLSC has run many trips there in the past.

Sally's bus trips are well-known with shrimp cocktail and other delicious goodies on the way up and PLENTY of delicious home-baked cookies to enjoy throughout the weekend. Plus, no airport hassle, no luggage angst, no traveling on a weekend!! What could be a better deal!! Sally's trips always fill up quickly -- you "snooze", you lose!

- Dates:** March 3 - 7, 2011
- Trip Leader:** Sally Hilderbrand  
712 Barrington Road  
Collegeville, PA 19426  
610-489-4718  
[shilderbrand@comcast.net](mailto:shilderbrand@comcast.net)
- Transportation:** Bus
- Departure:** 1:00 pm, Thursday, March 3<sup>rd</sup>  
Marriott Courtyard, Valley Forge
- Lodging:** Stowehof Inn, Stowe, VT
- Return:** Monday, March 7<sup>th</sup>  
Leave Stowe, 2:30 pm
- Cost/Member:** \$570 pp, dbl occupancy
- Includes:** Bus, Inn, 4 breakfasts, 3 dinners, Treats on bus trips, LOTS of cookies!
- NOT included:** X-C trail passes, DH lift tickets
- Deposit:** **\$150** due at sign-up
- Balance due:** **\$420, January 20, 2011**
- Cancellation:** MLSC policy applies.

# Breckenridge, CO



Hyatt Main Street Station at night

## March 5 to 12, 2011

Perfect Mountain - Perfect Mountain Town. We are staying at Hyatt Main Street Station - 300 yards to the lift, and a one-block walk to the shuttle stop to town. Hyatt Main Street Station consists of 50 luxurious studios, two and three bedroom residential-style units ideally located directly on Main Street in the heart of Breckenridge.

<http://hyattmainstreetstation.hyatt.com/hyatt/hotels/index.jsp>

Among resorts in Breckenridge, guests at the Hyatt Main Street Station have privileges at the Pioneer Club for a host of hillside amenities.

- Date:** March 5 to 12, 2011
- Leaders:** Glenn & Sally Price  
1951 Colt Rd  
Media, PA 19063  
610-891-0929  
[Glenn@glenniprice.com](mailto:Glenn@glenniprice.com)
- Included:** Airfare, all ground transportation, lift tickets 5 out of 6 days, 3 bedroom 3 bath condos, welcome party at the lodge, wine and cheese party during the week, pre-trip and post-trip parties
- Lodging:** Hyatt Main Street Station  
505 South Main Street  
1 970 547 6015
- Depart:** United AL early Saturday, March 5<sup>th</sup>
- Return:** Southwest AL (?) mid-afternoon Saturday, March 12<sup>th</sup>
- Cost:** \$1,550 per person (dbl occ)
- Payments:** **Deposit:** \$500 at sign-up  
**Second:** \$550. Nov. 15<sup>th</sup>  
**Balance:** \$500 Dec. 31, 2010
- Cancellation:** MLSC policy applies. Trip insurance advised and available.

**MLSC Cancellation Policy: Page 12**

## Explore Southern Africa with MLSC May 2011!!

MLSC members Jack Behrle and Wendy Wolf are planning a trip to South Africa in May 2011 and would love to have fellow MLSC'ers go with them. Tours will include Cape Town, Johannesburg, the Zambezi River in Zambia, Victoria Falls, and three separate tented camps in Botswana, visiting bush, dry and watered habitats. An additional option that Jack and Wendy are doing is a 4-day visit to Etosha Nat'l Park in Namibia (cost is extra).

Trip arrangements are being made through Premier Tours in Philadelphia. While the trip is a year away, the time to reserve is NOW since the camps where you will visit are small, intimate sites and can only accommodate a limited number of people.

Cost PER PERSON is either \$8895 (going to Etosha Nat'l Park) or \$8365 (excluding this option). Intra-Africa flights will be either \$1260 (with

Etosha) or \$965 (without Etosha). The cost of your flight to and from Africa is in addition.

For additional information about the trip with Jack and Wendy, you can **contact Jack at** [john.behrle@comcast.net](mailto:john.behrle@comcast.net) OR call Premier Tours at 215-893-9966 and ask for either Julian or Lisa. To reserve a space, a deposit of \$1600 is required. If you have ever wanted to go to southern Africa, but are reluctant to travel alone, HERE IS YOUR CHANCE!! Contact Jack or Premier Tours today!



**When signing up for a trip or activity, please fill out and include this reservation form along with your deposit made out to Main Line Ski Club.  
(You must be a member of MLSC or an EPSC member club that offers reciprocity.)**

## Main Line Ski Club Trip/Activity Reservation Form

Trip/Activity: \_\_\_\_\_

Date(s): \_\_\_\_\_

Name(s) (if couple): \_\_\_\_\_ Member: Yes No

\_\_\_\_\_ Member: Yes No

**Note: Please use complete legal name(s) as cited on ID/Passport and print clearly.**

Address: \_\_\_\_\_

Home Phone(s) \_\_\_\_\_

Work Phone(s) \_\_\_\_\_

Cell Phone(s) \_\_\_\_\_

Email(s) \_\_\_\_\_

Airline/Frequent Flyer #(s) \_\_\_\_\_

Emergency Contact/Phone: \_\_\_\_\_

### Acknowledgement of Responsibility and Release of Liability

The Main Line Ski Club is a year-round social/sports club providing a variety of activities for its members. Most of its activities are, to varying degrees, hazardous. By assuming all risks involved, I agree not to hold Main Line Ski Club, its Officers, its Board Members or trip leaders liable for any accident or injury resulting from my participation in this Club activity. After reading, understanding and accepting the Release of Liability, I hereby make a reservation for this trip/activity.

Birth date required for all airline travel..... **MM/DD/YYYY**

**Signed:** \_\_\_\_\_ Date \_\_\_\_\_ Birthdate \_\_\_\_ / \_\_\_\_ / \_\_\_\_

**Signed:** \_\_\_\_\_ Date \_\_\_\_\_ Birthdate \_\_\_\_ / \_\_\_\_ / \_\_\_\_

### Club Policy Regarding Cancellation

All cancellations must be received in writing by the trip leader. Cancellation penalties apply to all MLSC trips. Because of the complexity of financing most major trips, trip leaders establish their own cancellation and refund amounts and schedules according to the payment requirements of the airlines and trip providers. A minimum administrative fee of \$25 for weekend/bus trips and \$35 for major/airline trips is charged for any cancellation. In the event a cancellation occurs before a trip leaves and a replacement is found, deposits and payments will be refunded less the MLSC admin fee and any fees charged by the airline or tour provider. In the event a cancellation occurs before a trip leaves, and a replacement is not found, deposits and all payments may be forfeited. Any refund will be dependent on the payment and cancellation schedule with the airline, bus or accommodation or tour provider and any losses that may be incurred by MLSC. Please speak to your trip leader to make sure you understand this process before you sign up for any MLSC trip.

*All individuals that participate in this adventure program (including skiing, hiking, biking and other such activities) do so at their own risk. Participant assumes the inherent risks associated with these adventure activities, which can be dangerous. Risks include such occurrences as altitude sickness, illness, disease, overexertion, broken limbs and alcohol consumption. By signing this document, I agree to take full responsibility for my own actions, safety and welfare.*

**Insurance:** Travel Insurance is highly recommended. See your Trip Leader for details.

# **Main Line Ski Club Ski Trip Policy**

## **RESERVATIONS AND DEPOSITS**

Reservations will be accepted on a first-come first-served basis, as follows:

- **Only MLSC members may go on the trips.**
- Only MLSC members may sign up prior to or during the September general meeting
- **Members of other EPSC clubs may sign up only after the September general meeting has been held and must become members of MLSC.**

Reservations are confirmed only when a deposit and a signed reservation form and release of liability are received. The deposit amount is indicated in each trip's individual description. Separate payments are required for each trip and checks should be made payable to Main Line Ski Club. No cash payments can be accepted. To take advantage of the discount policy, when offered, payment in full must be received by the early payment date.

## **SURCHARGES**

When a trip has reached its quota, a formal waiting list will be established requiring a \$25 per person deposit for weekend/bus trips and \$35 per person for major/airline trips. This deposit will be applied to the cost of the trip if a cancellation occurs and the wait-listed person is moved onto the trip. The deposit will be refunded in full if the wait-listed person is not called or if he or she cancels from the wait list prior to being called. However, if a person remains on the wait list, is called but decides they cannot go (for whatever reason) the deposit is forfeited.

## **CANCELLATIONS AND REFUNDS**

All cancellations must be received in writing by the trip leader. Cancellation penalties apply to all MLSC trips. Because of the complexity of financing most major trips, trip leaders establish their own cancellation and refund amounts and schedules according to the payment requirements of the airlines and lodgings. A minimum administrative fee of \$25 for weekend/bus trips and \$35 for major/airline trips is charged for any cancellation.

In the event a cancellation occurs before a trip leaves and a replacement is found, deposits and payments will be refunded, less the MLSC admin. fee and any fees charged by the airline (if applicable). In the event a cancellation occurs before a trip leaves and a replacement is not found, deposits and all payments may be forfeited. Any refund will be dependent on the payment and cancellation schedule with the airline, bus or accommodation, and any losses that might be incurred by MLSC. Please speak to a trip leader to be sure you understand this process before you sign up for any MLSC trip.

## **ACCOMMODATIONS**

All costs are for double occupancy unless otherwise noted.

Trip leaders have limited information available ahead of time as to room configuration and specific amenities. While we attempt to book equal facilities for all trip participants there can be discrepancies, with condos especially, from room to room. Please try to be flexible, but if there are major issues with your assigned place, talk to your trip leader immediately upon check-in.

## **DEPARTURES**

Departure times listed in trip write-ups are subject to change, due to airline rescheduling. Be sure to communicate with your trip leader 2-3 weeks before your trip departs.

## **OTHER**

Anyone under the age of 21 must be accompanied by an adult.

The Main Line Ski Club maintains a No Smoking policy for all trips. This includes bus, condos and parties.

Laptop computers should be used only during off hours so as not to tie up the telephone. People use the phone to make ski plans early in the morning and dinner plans late afternoon/early evening. Be considerate of your roommates/condo mates when using phone lines for computer purposes.

**TRIP PARTICIPANTS ARE SOLELY RESPONSIBLE FOR CARING FOR THEIR OWN EQUIPMENT.**

# MAIN LINE SKI CLUB SUNDAY NIGHT TENNIS, 2010-11

**When**       Sundays, Beginning September 12<sup>th</sup> , 4:30 – 6:30 p.m. thru May 1, 2011  
**Where**       Springton Tennis & Racquet Club, Rte. 252, Media (610) 356-2003  
**Cost:**        \$15/member; \$18/guest of member.  
                   Cost includes the courts, balls, and refreshments.

## SUNDAY NIGHT FORMAT

On Sunday nights we play 4 courts/2 hours per week from 4:30 to 6:30 p.m. The format will be round robin, 4 half-hour sessions.

If the initial response to the Fall program warrants more courts or more hours, we will adjust the program accordingly.

**"A-B" Players** - Must have a Springton rating of 3.5 or better. The round robin schedule will be organized for maximum competitiveness, according to level of play.

**"C" Level// Non-Rated Players** - In weeks where there are enough to fill at least one court (4 players) or more, one court will be designated for this group.

To participate, mail the Mixed Doubles Round Robin reservation form, along with your check, payable to **Main Line Ski Club**, to:

Stacey Roehrs  
 315 Spencer Road  
 Devon, PA 19333

## Free Rating Clinics

You are encouraged to have your level of play rated. Springton Racquet Club is providing free ratings clinics as follows: Thursday, September 9th at 1:30pm & 7:00pm; Saturday, September 11th at 12:00pm; Saturday, October 2nd at 12:00am. Ratings are also given the first Saturday of each month - October thru May

**You must call 610-356-2003 in advance to register for the rating clinics.**

## Cancellation Policy:

If you find you cannot make a session you've signed up and paid for in advance, try to arrange for your own sub and have them reimburse you. If you cannot find a sub, PLEASE contact the coordinator as early as possible so they can try to fill your spot. If the coordinator finds a sub for you, you will be eligible for a make- good session. If no sub is found, no refund or make-good session will be given.

## Main Line Ski Club Tennis Coordinators 2010-2011 Season

		Home Phone	Work Phone
<b>Overall Tennis Coordinator</b>	<b>Stacey Roehrs</b>	<b>610-804-5891</b>	<b>610-363-7999</b>
A/B Group Coordinator	Stacey Roehrs	610-889-9086	610-363-7999
C Group Coordinator	Sue Kapusta	610-284-1069	610-626-1400 x312
Hilton Head Coordinator	Chris Cobb	610-308-2468	
Ski Club Meeting Spokesperson	Cindy Doan	610-642-0746	215-255-1760

**MLSC**  
**TENNIS 2010 – 2011 CONTRACT SIGN-UP**  
**SUNDAY EVENING MIXED DOUBLES ROUND ROBIN**  
**(Circle below all dates that you wish to play)**

**Mail this form—along with your check payable to Main Line Ski Club—to:**

Stacey Roehrs 315 Spencer Road Devon, PA 19333	Per Session: \$15/member; \$18/non-member Cost includes the courts, balls, and refreshments.
--	---

**NAME:** \_\_\_\_\_

**ADDRESS:** \_\_\_\_\_

**DAYTIME PHONE:** \_\_\_\_\_ **EVENING:** \_\_\_\_\_

**E-MAIL ADDRESS:** \_\_\_\_\_

**Level of Play (Check One):**  A  B  C

2010				2011				
SEPT	OCT	NOV	DEC	JAN	FEB	MAR	APR	MAY
	3	7	5	2	6	6	3	1
12	10	14	12	9	13	13	10	
19	17	21	19	16	20	20	17	
26	24	28	<input type="checkbox"/>	23	27	27	<input type="checkbox"/>	
	31			30				

**Note:**  No tennis scheduled: December 26, 2010 Christmas break and April 24, 2011 Easter

**Cancellation policy** If you find you cannot make a session you've signed up and paid for in advance, try to arrange for your own sub and have them reimburse you. If you cannot find a sub, PLEASE contact the coordinator as early as possible so they can try to fill your spot. If the coordinator finds a sub for you, you will be eligible for a make good session. If no sub is found, no refund or make-good session will be given.

**Acknowledgement of Responsibility and Release of Liability**

**The Main Line Ski Club is a year-round social/sports club providing a variety of activities for its members. Most of the activities are, to varying degrees, hazardous. By signing up for this trip/activity, I voluntarily assume the risks involved. By assuming all risks involved, I agree not to hold Main Line Ski Club, its officers or board members, or trip leaders, liable for any accident or injury resulting from my participation in this club activity. After reading, understanding, and accepting the Release of Liability, I hereby make a reservation for this trip/activity.**

**Signed:** \_\_\_\_\_ **Date:** \_\_\_\_\_

# Main Line Ski Club Annual Membership Form 2010-2011

**Please print legibly:**

Member Name: \_\_\_\_\_

(For Renewals, please include CHANGES ONLY)

Address: \_\_\_\_\_

Home Phone: \_\_\_\_\_ Work Phone: \_\_\_\_\_ Cell Phone: \_\_\_\_\_

Additional Family Members: \_\_\_\_\_, \_\_\_\_\_, \_\_\_\_\_

E-mail (Print very clearly, please) : \_\_\_\_\_

Preferred Method of Receiving Ski Tracks  E-Mail  US Mail \*

\* Please include a \$20.00 surcharge to receive the newsletter by US Mail.

**Interests: Skiing:**  Eastern  Western  European  Cross Country  
**Sports:**  Tennis  Biking  Hiking  Snowshoeing  
**Socials:**  Parties  Wine & Dine  Culture Events/Museums

I would like to help with the following Committee(s)

- Activities Committee
- New Members Committee
- Publicity Committee
- Technical Support Committee
- I am interested in being trained as a possible ski trip leader.

What improvements would you like to see in the Club?

Suggestions for any particular trips or activities: \_\_\_\_\_

## ***Acknowledgement of Responsibility and Release of Liability***

The Main Line Ski Club is a year-round social/sports club providing a variety of activities for its members who must be 21 years of age or older. Most of the activities are, to varying degrees, hazardous. By making this application for membership, I / We voluntarily assume the risks involved. By assuming all risks, I / We agree not to hold the Main Line Ski Club, its officers or board members liable for any accident or injury resulting from my/our participation in a club activity. After reading and understanding this Release of Liability, I / We hereby apply for membership in the Main Line Ski Club.

Member Signature: \_\_\_\_\_ Date: \_\_\_\_\_

2nd Adult Family Member Signature: \_\_\_\_\_ Date: \_\_\_\_\_

Individual Membership - \$35 \*  Couple/Family Membership<sup>1</sup> - \$45 \*

**\* For those electing to receive the Newsletter by US mail add a \$20.00 surcharge to the cost of dues.**

Please return the completed form along with your check, payable to Main Line Ski Club, to:

**Linda LaChapelle, 1 Braxton Road, Rosemont, PA 19010  
Membership year expires September 30<sup>th</sup>.**

<sup>1</sup> 'Family Membership' includes couples living together and all children under the age of 26 living with them.

Linda LaChapelle  
1 Braxton Road  
Rosemont, PA 19010

## **Main Line Ski Club** **Fall 2010 Calendar of Activities**

Take a look, then MARK your CALENDARS **NOW** so you don't forget!!

\* Indicates CC Phila.-oriented event

<b>Sun., Oct. 3<sup>rd</sup></b>	Ridley Creek Blazed Trail Hike – Newtown Square
<b>Sat., Oct. 9<sup>th</sup></b>	Wine 'n Dine Trattoria Giuseppe – Newtown Square
<b>Tues., Oct. 12<sup>th</sup></b>	<b>General MLSC Meeting, Crowne Plaza, KOP</b>
<b>Fri., Oct. 15<sup>th</sup></b>	Happy Hour at 'The Paddock' —Strafford
<b>Sat., Oct. 16<sup>th</sup></b>	Murder Mystery Dinner Theater—Ardmore
<b>Thurs., Oct. 21<sup>st</sup></b>	Activities Meeting—Collegeville
<b>Sun., Oct. 24<sup>th</sup></b>	Valley Forge to Fitzwater Station, Phoenixville Bike Ride & Picnic
<b>Sat., Oct. 30<sup>th</sup></b>	* Laurel Hill Cemetery Flashlight Tour—Philadelphia
<b>Sun., Nov. 7<sup>th</sup></b>	Movie 'n Munch—KOP Mall
<b>Tues., Nov. 9<sup>th</sup></b>	<b>General MLSC Meeting, Crowne Plaza, KOP</b>
<b>Fri., Nov. 12<sup>th</sup></b>	Happy Hour at 'The Paddock' —Strafford
<b>Sun., Nov. 14<sup>th</sup></b>	Annual Wine & Cheese—Newtown Square
<b>Sat., Nov. 20<sup>th</sup></b>	Wine 'n Dine at High Street Caffe—West Chester
<b>Thur.,-Sun., Nov. 25-28</b>	Thanksgiving Holiday Weekend
<b>Sun., Nov. 28<sup>th</sup></b>	Post-Thanksgiving Hike in VF Park